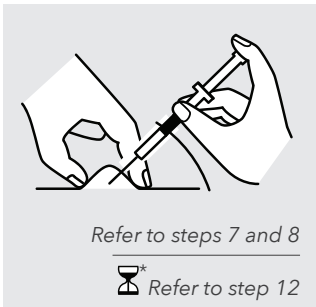
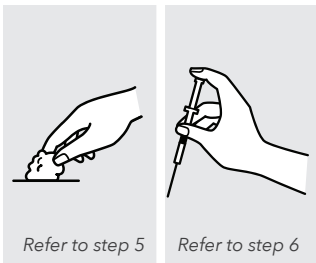
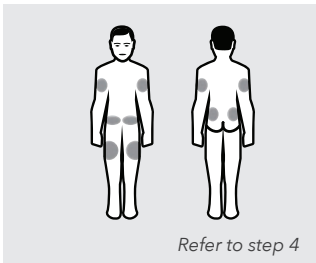
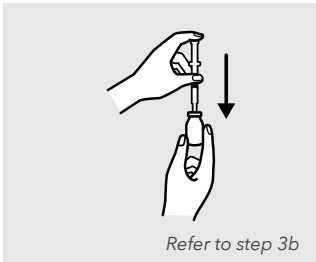
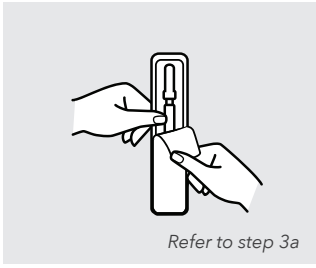


Counselling Checklist

Directions for use of subcutaneous injections



Refer to instructions for waiting time

- 1 Wash your hands with soap and water.
- 2 Prepare everything you will need (syringe, needle, alcohol swab and drug).
- 3 a. Pre-filled syringe: Remove the pre-filled syringe from the blister packaging.
OR
b. Multi-dose vial: Withdraw the drug from the vial using the appropriate technique.
- 4 Choose one of the injection sites from the illustration, or as instructed.
- 5 Wipe the injection site with the alcohol swab and let dry.
- 6 Using your dominant hand, hold the syringe like a pencil between your thumb and middle finger.
- 7 Gently pinch the skin at the injection site using your thumb and forefinger in order to create a skin fold.
- 8 Insert the needle into the skin fold vertically at an angle, as instructed.
- 9 Prior to injection, verify to ensure that there is no blood, by pulling the plunger back a little.
- 10 Use your forefinger to press the plunger, and inject the entire dose slowly.
- 11 Pull the needle straight out from the injection site, and release the pinched skin.
- 12 Press a cotton swab on the injection site for five to 10 seconds.
- 13 Dispose of the syringe and needle into an approved container and in a safe manner.
- 14 For each subsequent injection, select a different injection site.